

Forthcoming July 2008

2008. Approx. 700 p. 150 illus., Softcover.
Springer Praxis Books
ISBN 978-0-387-77639-2
▶ \$ 39.95

A must read for those interested in understanding the origins and future directions of humankind as an emerging spacefaring species

Space Enterprise

Living and Working Offworld in the 21st Century

Philip Robert Harris, Harris International, Ltd., La Jolla, CA, USA

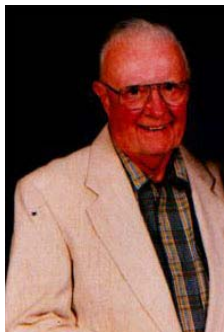
- ▶ Identifies the many challenges of future space exploration and development
- ▶ Discusses critical human factors in the planned industrialisation and settlement of space
- ▶ Explores important commercial, legal and political issues associated with space exploitation
- ▶ Examines the rationale for the utilisation of space technology and resources for the benefit of the human race

For over a half century, human activities in outer space have increased, but the high point was the Apollo Moon landings from 1969 – 1972. Now the United States has set forth a national space policy to return permanently to the lunar surface by 2020, and NASA is engaged in strategic planning to accomplish that goal. Furthermore, Europe, Russia, Japan, China, and India are undertaking missions to the Moon and its vicinity. All this will lead to using our sister planet as a space station and launch pad to Mars and other celestial bodies.

In **Space Enterprise-Living and Working Offworld in the 21st Century**, Dr Philip Harris provides the vision and rationale as to why humanity is leaving its cradle, Earth, to use space resources, as well as pursuing lunar industrialization and establishing offworld settlements. As a management/space psychologist, Dr. Harris presents a behavioral science perspective on space exploration and enterprise.

In this his 48th published book, the author has completely revised and updated the two previous editions of this classic, placing new emphasis on the need for more synergy and participation by the private sector. He not only provides a critical review of what is happening in the global space community, but offers specific strategies for lunar economic development. The author analyzes the human factors in contemporary and future space developments, especially relative to the deployment of people aloft. This user-friendly volume offers numerous photographs, diagrams, exhibits, and case studies. Easily readable, as well as useful as a reference work, the book's content covers a wide range of practical considerations related to human activities offworld. To live and work successfully in a microgravity environment, the author examines human performance and organizational management, as well as physical, psychological, political, commercial, legal, and other dimensions.

▶ “In anticipation of the challenges and opportunities of becoming a spacefaring civilization, it is essential that we understand the steps they have brought us to this point and formulate a bold vision for the upcoming migration of humans into space. That is precisely what Dr. Harris achieves in this thoroughly researched and comprehensive work (...) Dr. Harris provides a wealth of information on the diverse issues involved with living and working in space, such as habitat design, ergonomics, high performance physiologic and psychological concerns, protection from space hazards, cultural issues, and medical concerns. (...) For those who are interested in understanding the origins and future directions of humankind as an emerging spacefaring species, **Space Enterprises- Living and Working Offworld** by Dr. Phil Harris is a must read.” David G. Schunk, M.D., author of *The Moon: Resources, Future Development, and Settlement*



Philip Robert Harris, Ph.D., is a management/space psychologist, as well as a prolific author and futurist. For more information about the author, visit:
www.drphilipharris.com

Contents:

DEDICATION - In Memory of the Shuttle Crews, Challenger and Columbia
ACKNOWLEDGEMENTS, LIST OF EXHIBITS
FOREWORD – Dr. David G. Schrunk
PROLOGUE, TABLE OF CONTENTS
CHAPTERS

1. Toward Global Space Vision, Ethos, and Enterprise
2. Human Space Exploration and Settlement
3. Space Habitability and the Environment
4. Cultural Implications of Space Enterprise
5. High Performing Spacefarers
6. Orbital Personnel Deployment and Tourism
7. Macrothinking in Strategic Space Planning
8. Macromangement of Space Enterprise
9. Challenges in Offworld Private Enterprise
10. Lunar Enterprise and Development

EPILOGUE

APPENDICES

- A. Governance Issues in Space Societies - Dr. George Robinson
- B. Space-based Energy - Lunar Solar Power - Drs. David Criswell and Philip R. Harris
- C. Learning from Space Entrepreneurs - Dr. Thomas Matula
- D. Health Services Aloft - Space Nurses - Linda Plush and Eleanor O'Rangers, Pharm.D.

E. International Lunar Observatory Strategy - Steve Durst

RESOURCES - References and Websites, INDEX, ABOUT THE AUTHOR, ABOUT THE CONTRIBUTORS

► “A classic is reborn in **Space Enterprise - Living and Working Offworld in the 21st Century!** Dr. Philip Harris weaves many different threads - political, economic, managerial, technological, cultural and psychological - into a scholarly but lively and entertaining account of our past, present, and future in space. The author does not let us forget that many of the most important ideas were introduced early in the space program, while producing a fresh book that will be of interest to people who are familiar with his earlier works, as well as a new generation of readers. Authoritative, comprehensive, upbeat with a strong international flavor, this volume on human enterprise in space should be valuable for many years to come.” Albert A. Harrison, Ph.D, Professor Emeritus of Psychology, University of California-Davis and author of *Spacefaring: The Human Dimension*

Order Now!

Yes, please send me

_____ copies Harris, P: Space Enterprise
ISBN: 978-0-387-77639-2 ► \$ 39.95

- Check / Money order enclosed
 Please charge my credit card:

- MasterCard VISA AmEx

Number exp. Date

Please send order to:

Springer
Order Department
PO Box 2485
Secaucus, NJ 07096-2485

Name
Address
Address
(Sorry, we cannot deliver to P.O. boxes)
City / State / ZIP-Code
Country
Telephone / Email
Date ✕
Signature ✕

► Call toll-free 1-800-SPRINGER, 8:30 am – 5:30 pm ET
► Fax +1 (201) 348-4505 ► Email orders-ny@springer.com

CA, CO, MA, MO, NJ, and NY residents, please add sales tax. Canadian residents, please add 7% GST. Please add \$5.00 for shipping one book and \$1.00 for each additional book. Outside the US and Canada add \$10.00 for first book, \$5.00 for each additional book. All orders are processed upon receipt. If an order cannot be fulfilled within 90 days, payment will be refunded upon request. Prices are payable in US currency or its equivalent. Remember, your 30-day return privilege is always guaranteed.